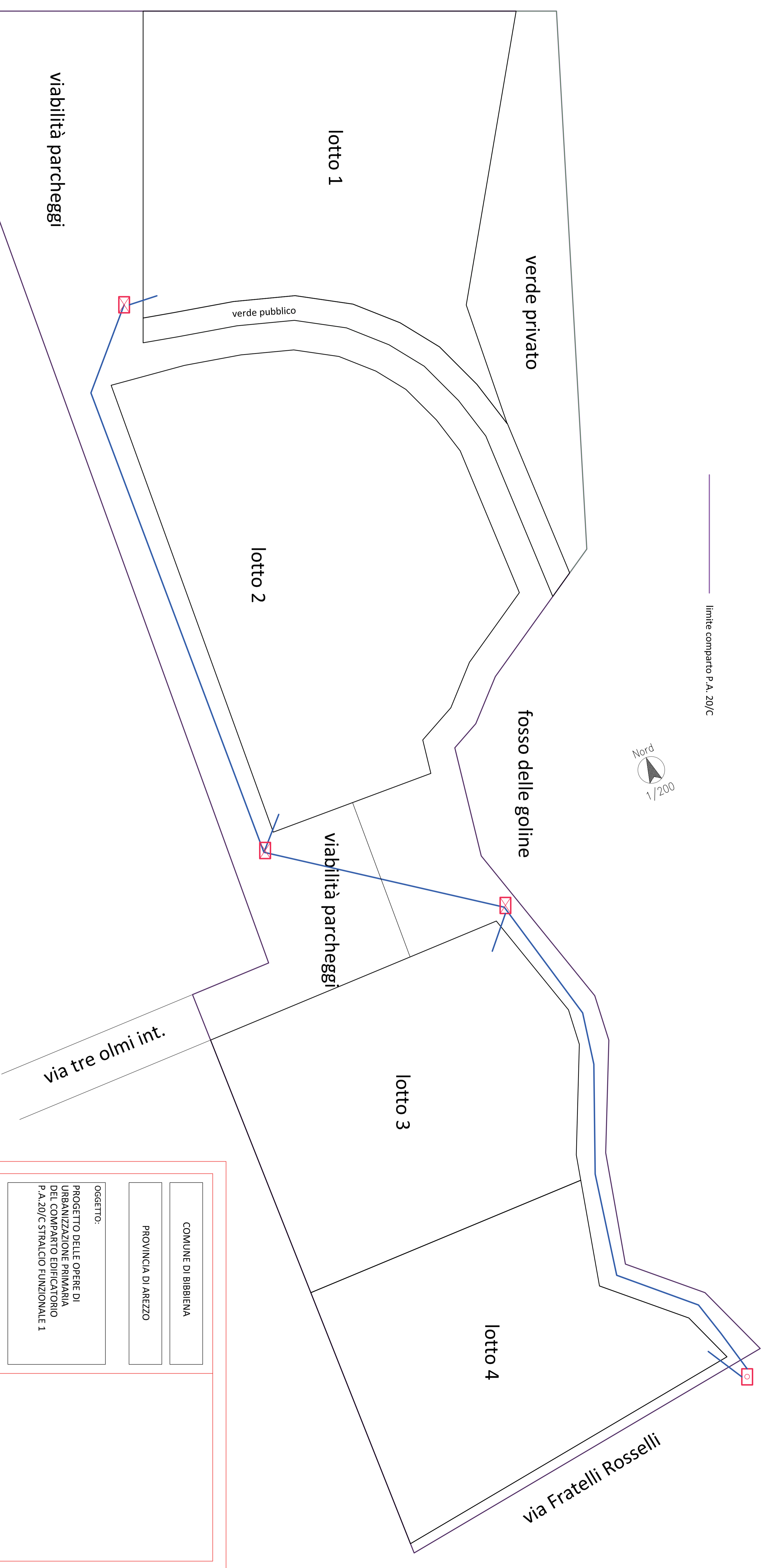
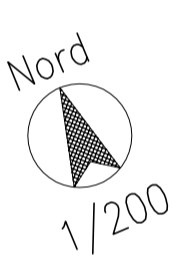




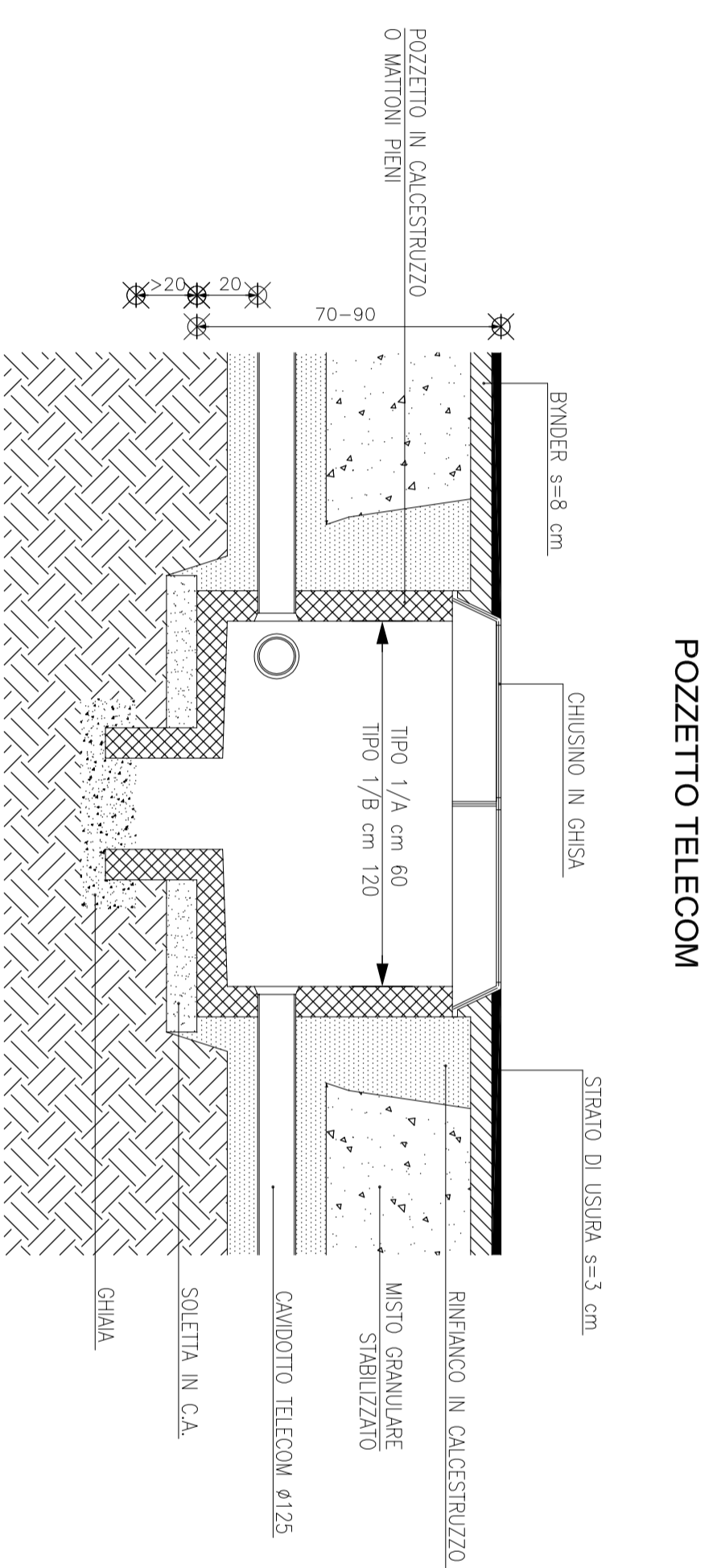


limite comparto P.A. 20/C

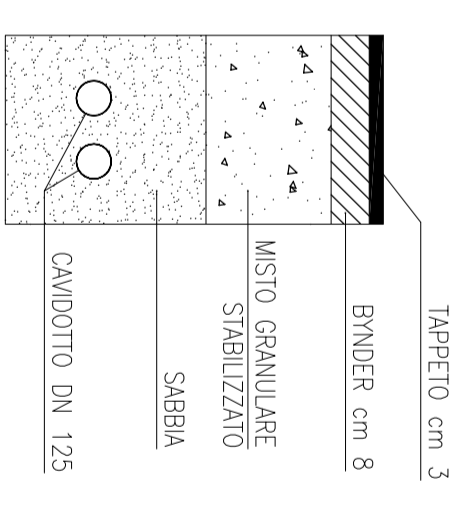


via TRE OLMI

-  LIMITE COMPARTO
-  CAVIDOTTO 2 DN 125
-  POZZETTO FORNITURA
-  POZZETTO DI FINE LINEA



SEZIONE TIPO DI POSA CAVIDOTTO



COMUNE DI BIBBIENA	
PROVINCIA DI AREZZO	
OGGETTO: PROGETTO DELLE OPERE DI URBANIZZAZIONE PRIMARIA DEL COMPARTO EDIFICATORIO P.A.20/C STRALCIO FUNZIONALE 1	
PROPRIETÀ: BENSI FRANCO - VIGNOLI NORMA	
Progettisti: cascano per le proprie competenze professionali Ing. Gino Gonnelli Geom. Roberto Gonnelli	
Via G. Boeci, 4 52010 SOCI TEL. e FAX 0575 561430 studীগonnelli@libero.it	
LINEA TELEFONICA E DATI	
TAVOLA 12	
Settembre 2020	