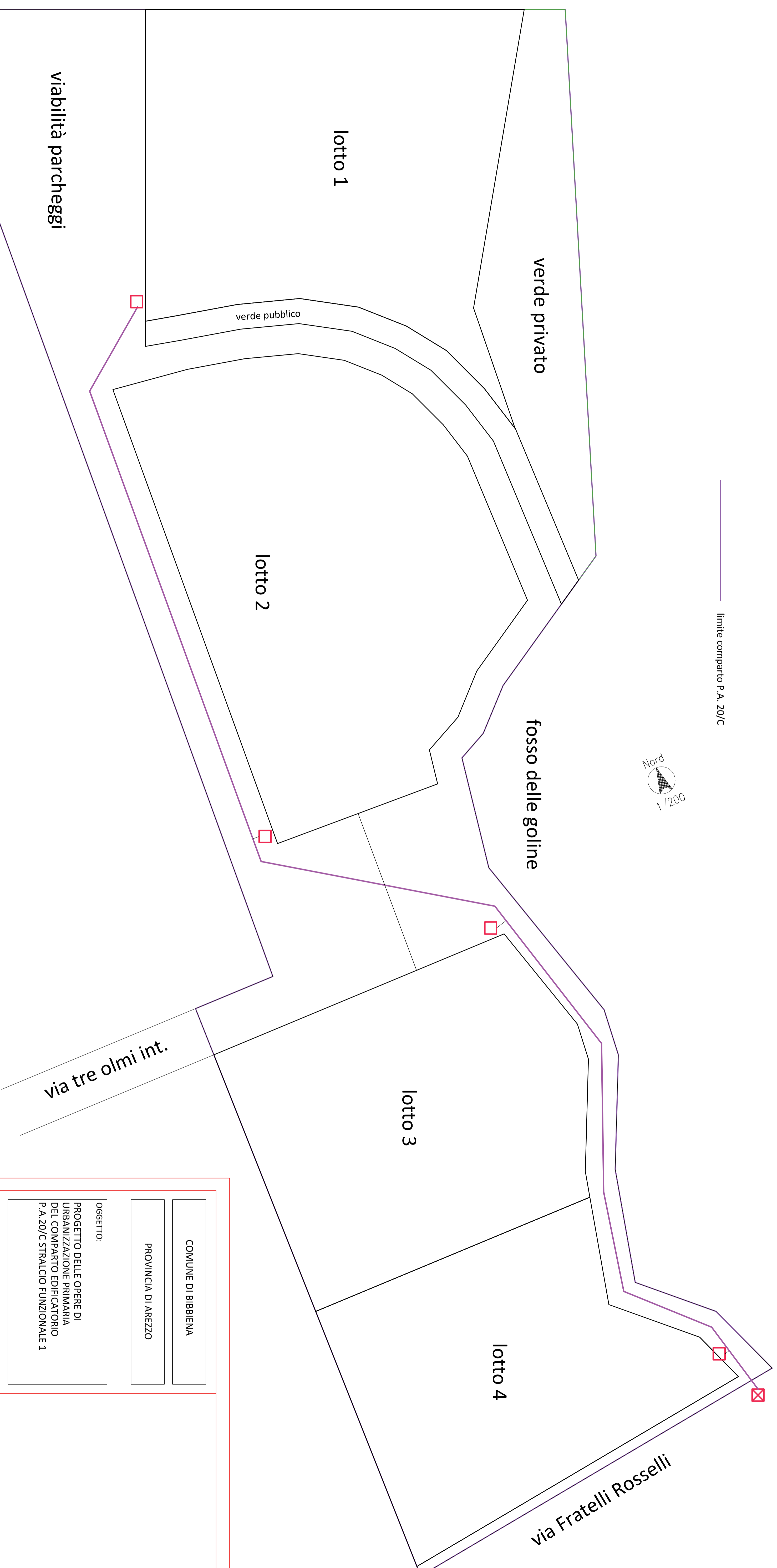
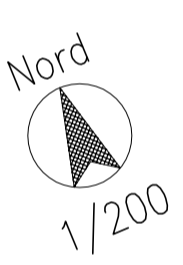
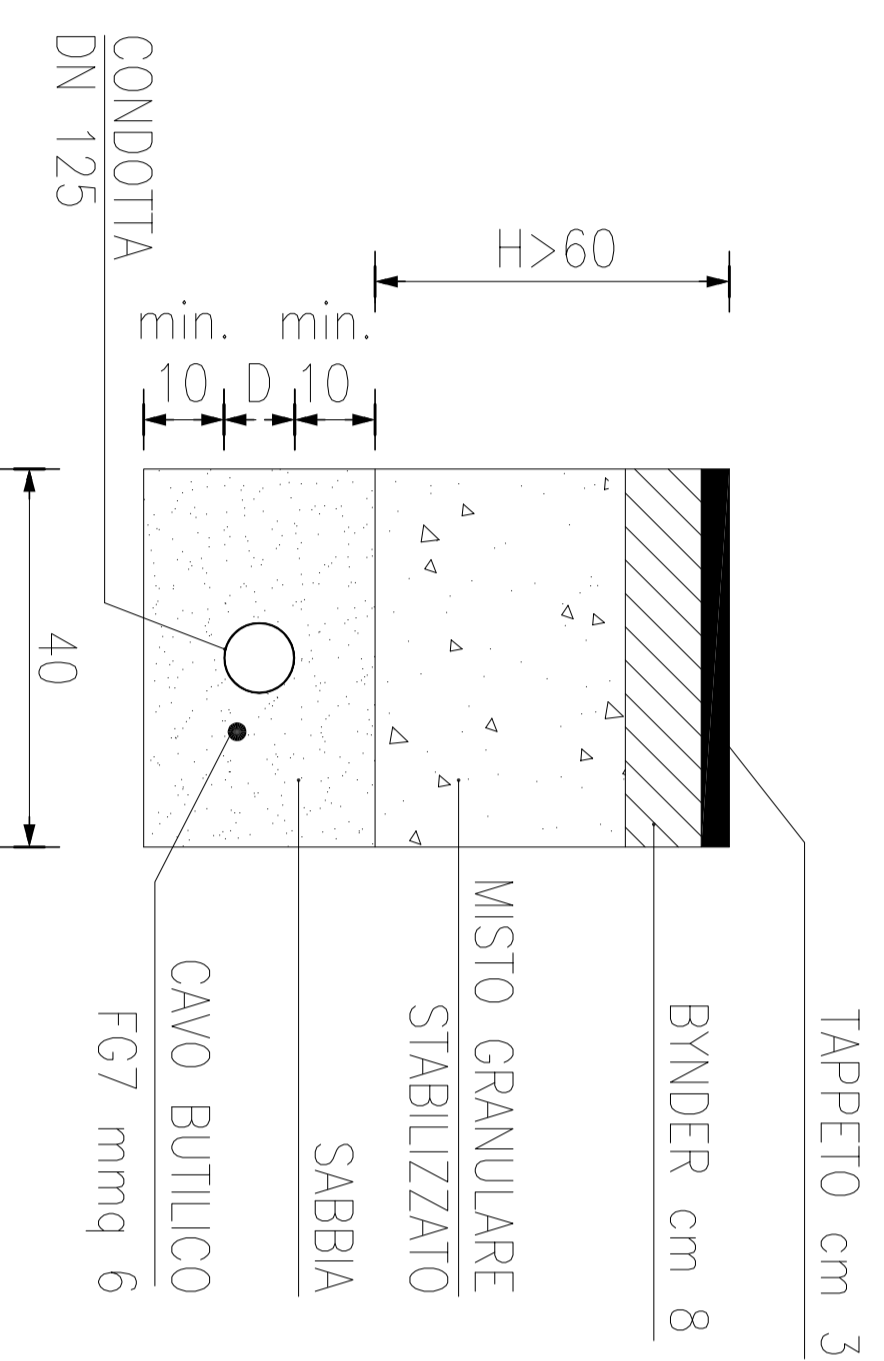






limite comparto P.A. 20/C



SEZIONE TIPO DI POSA



-  LIMITE COMPARTO
-  PUNTO FORNITURA
-  ARMADIETTO CON STAFFE
-  CAVIDOTTO DN 125

COMUNE DI BIBBIENA
PROVINCIA DI AREZZO

OGGETTO:
PROGETTO DELLE OPERE DI
URBANIZZAZIONE PRIMARIA
DEL COMPARTO EDIFICATORIO
P.A.20/C STRALCIO FUNZIONALE 1

PROPRIETÀ: BENSI FRANCO - VIGNOLI NORMA

Progettisti:
cascano per le proprie competenze professionali
Ing. Gino Gonnelli
Geom. Roberto Gonnelli
Via G. Bacchi, 4 52010 SOCI
TEL. e FAX 0575 561430
studীগonnelli@libero.it

LINEA GAS METANO

TAVOLA
10
Settembre 2020