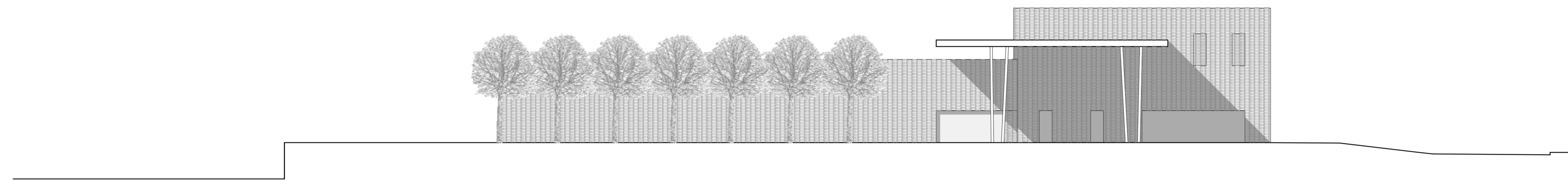


PROFILO 1-1

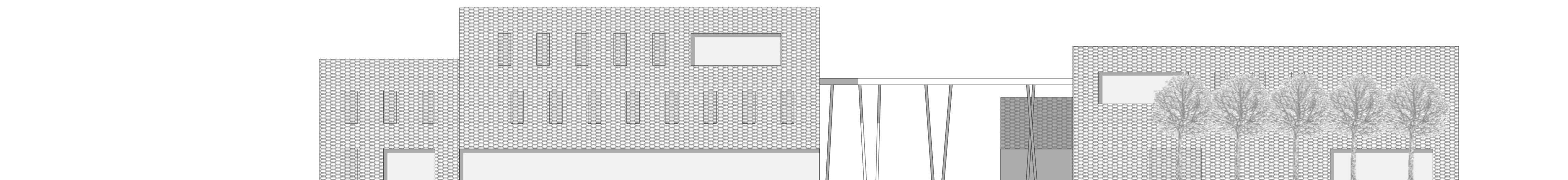


PROFILO 2-2

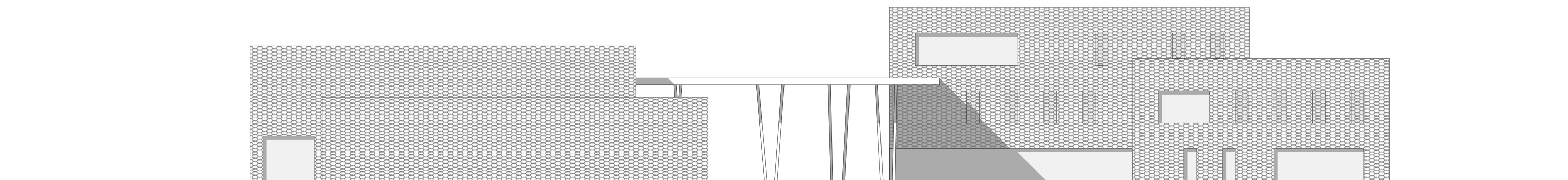


PROFILO 3-3

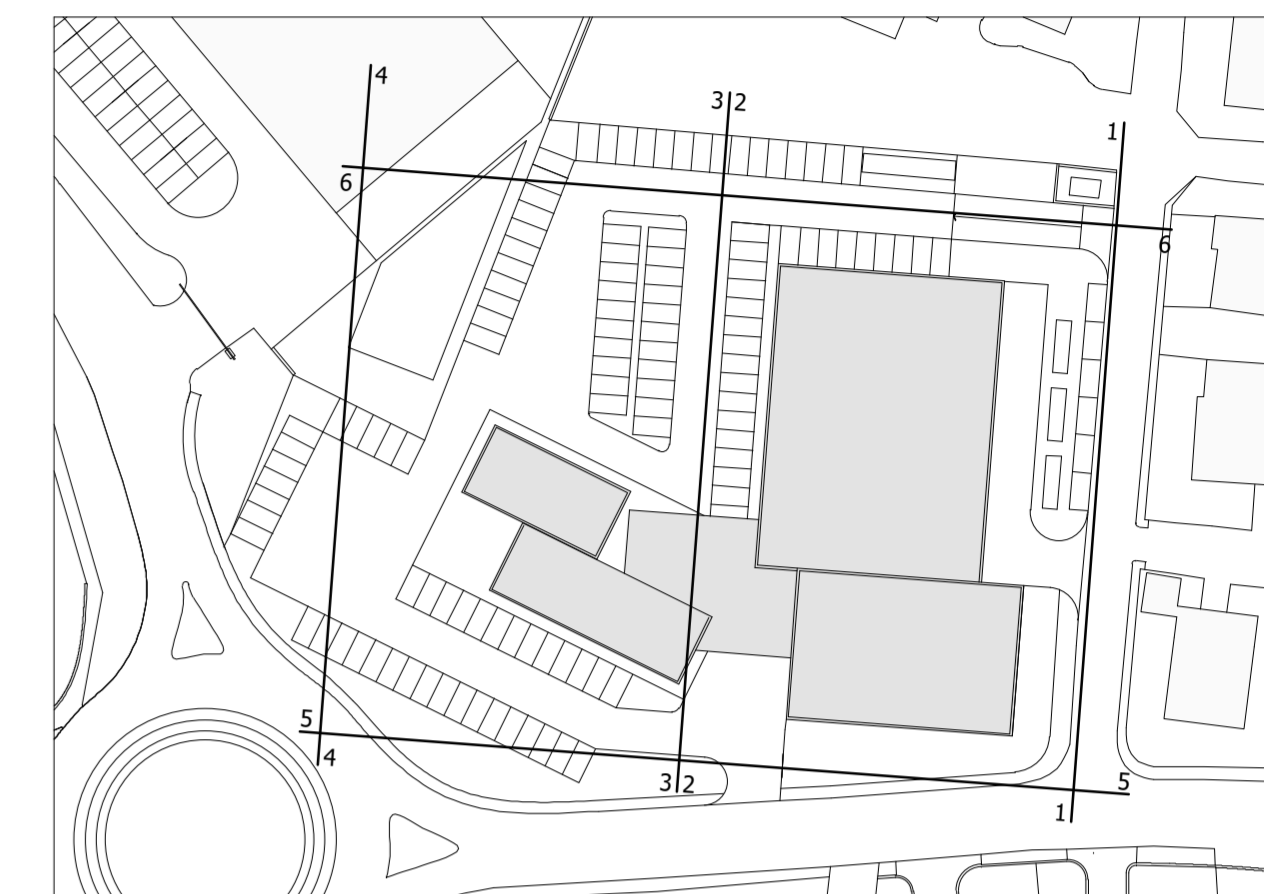
PROFILO 4-4



PROFILO 5-5



PROFILO 6-6



PROGETTO AREA "EX FIAT" - VARIANTE PIANO ATTUATIVO - PR 3D3 COMUNE DI BIBBENA - AREZZO		TITOLO NUOVI ASSETTI ARCHITETTONICI PROSPETTI
PROPRIETA' LO.CLA.IM. SPA locaim@legalmil.it PIAZZA D'AZEGLIO, 39 50129 FIRENZE FIRENZE ITALY		
PROGETTO ROBERTO RENZETTI ARCHITETTO roberto.renzetti@archivordpec.it TEL. +39 0575 56 10 69 FAX +39 0575 56 27 35 VIA GIUSEPPE BOCCI, 40 52010 SOCI AREZZO ITALY		
SCALA 1/200	DATA 02/2020 LF	
COMMESSA C20002	INFOFILE - ALLPLAN C20002 PB92	
AGGIORNAMENTI 05/2020 LF	NOTE *	
ELABORATO		