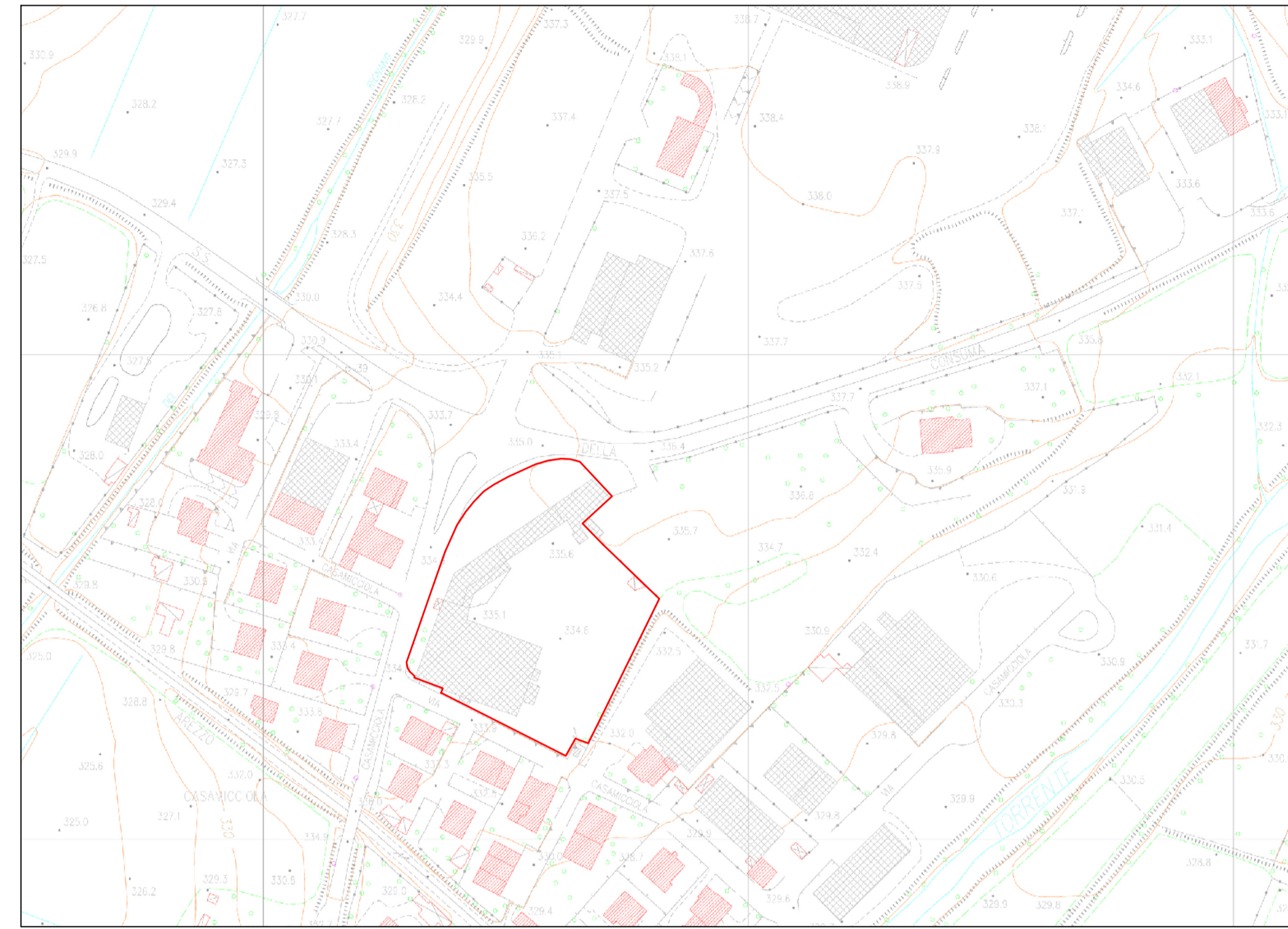


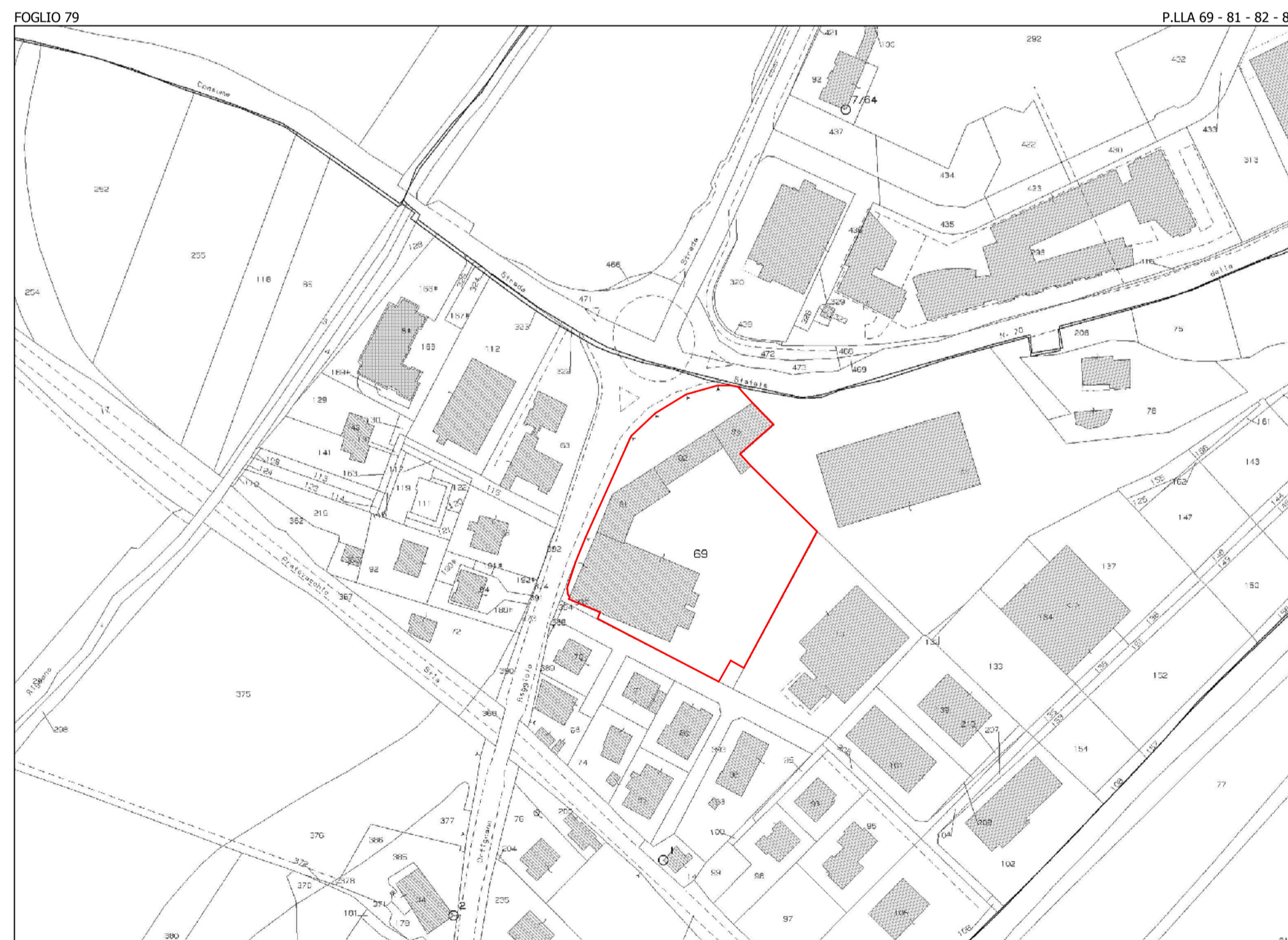
ESTRATTO I.G.M.

1/25000



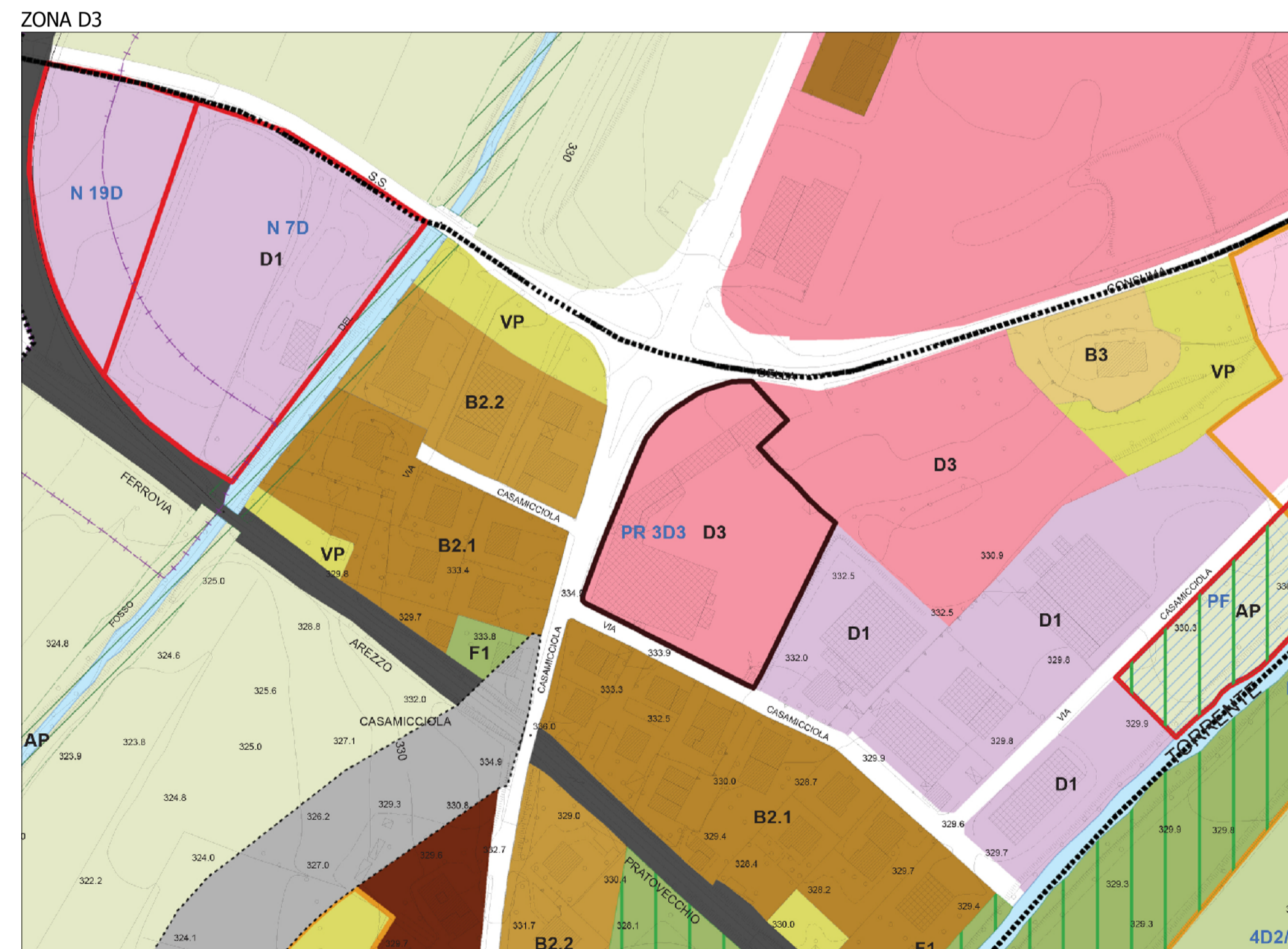
ESTRATTO AEROFOTOGRAMMETRICO

1/2000



ESTRATTO CATASTALE

1/2000



ESTRATTO REGOLAMENTO URBANISTICO

1/2000

PROGETTO AREA "EX FIAT" PIANO ATTUATIVO - PR 3D3 COMUNE DI BIBBIENA - AREZZO TITOLO	
PROPRIETA' LO.CLA.IM. SPA loclaim@legalmil.it PIAZZA D'AZEGLIO, 39 50129 FIRENZE FIRENZE ITALY	
PROGETTO ROBERTO RENZETTI ARCHITETTO roberto.renzetti@archiworldpec.it TEL. +39 0575 56 10 69 FAX +39 0575 56 27 35 VIA GIUSEPPE BOCCI, 40 52011 SOCI AREZZO ITALY	
SCALA 1/2000 1/25000	DATA 06/2013 AR
COMMESSA C13030	INFOFILE - ALLPLAN C13030 PB01
AGGIORNAMENTI *	NOTE *
ELABORATO	

A1