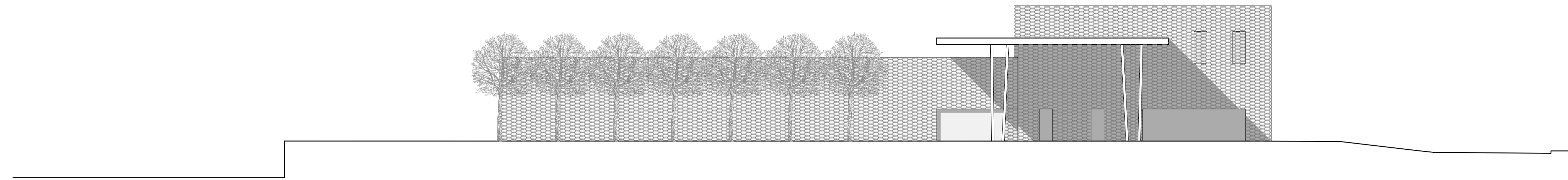


PROFILO 1-1

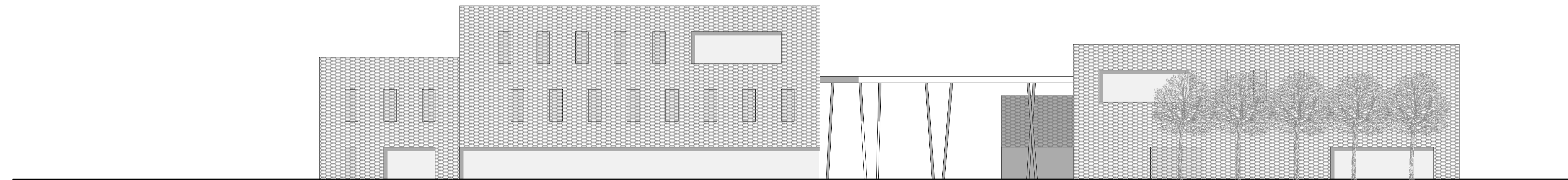


PROFILO 2-2

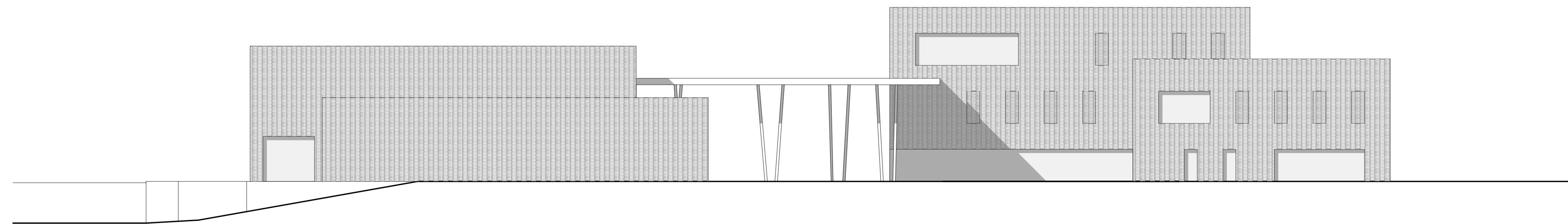


PROFILO 3-3

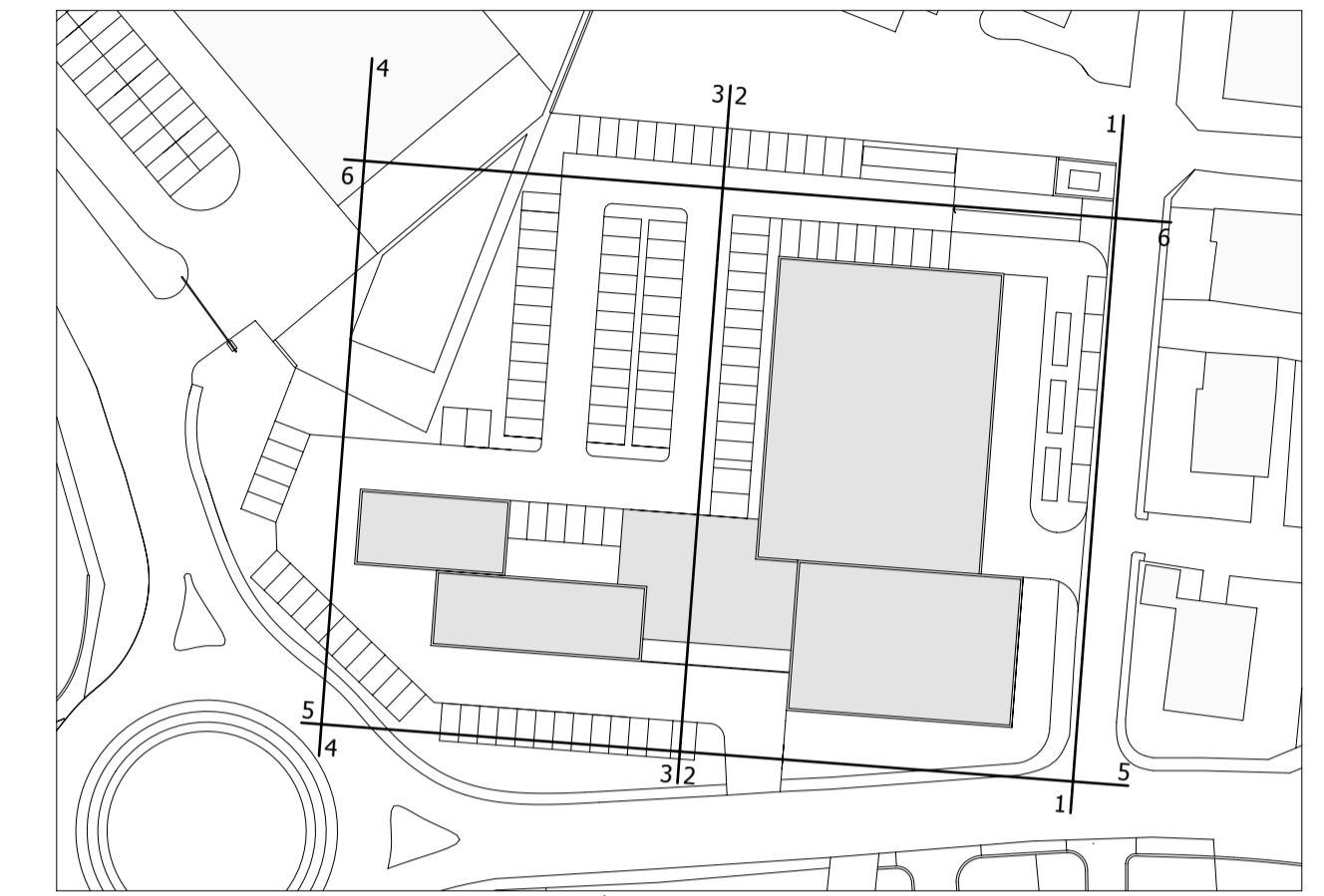
PROFILO 4-4



PROFILO 5-5



PROFILO 6-6



PROGETTO AREA "EX EIA" PIANO ATTUATIVO - PR 3D3 COMUNE DI LIBBERNA - AREZZO TITOLO INNOV. ASSETTI ARCHITETTONICI PROFILI	
PROPRIETA' LO.CLA.IM. SPA loclaim@legalmail.it PIAZZA D'AZEGLIO, 39 50129 FIRENZE FIRENZE ITALY	
PROGETTO ROBERTO RENZETTI ARCHITETTO roberto.renzetti@archiworldpec.it TEL. +39 0575 56 10 69 FAX +39 0575 56 27 35 VIA GIUSEPPE BOCCI, 40 52010 SOCI AREZZO ITALY	
SCALA 1/200	DATA 08/2013 AR
COMMESSA C13030	INFOFILE - ALLPLAN C13030 PB16
AGGIORNAMENTI *	NOTE *
ELABORATO	